

LED Video Displays

Fullcolored video display systems for indoor and outside application are today the most wide-spread media for advertisement, live video and information indication. The selection of the correct technical parameters for the respective application is of main importance, if one wants to find the product with the best cost/performance ratio.



Ideally for **indoor area** we offer boards with pixel distance of 7.6 mm and 10 mm in SMD LED technology. A large viewing angle of 140 degrees and an ideal color blending between red, green and blue LED's are here already reached with very small viewing distances of about 5 m. That is important for indoor applications, where the spectators sit partial close to the display. A homogeneous, colour-fast reproduction of the picture, a brilliant white picture as well as brightens 2.000 cd/m² guarantees a eyecatcher. Typical display sizes are here 5 m² to 20 m² and spectator distances from the board up to 50m.



In the mostly more extensive **outdoor area** (stadiums, places) one needs larger display systems. The pixel distance can be also larger, since the viewer has also a larger distance of the display. Depending upon the concrete local conditions we offer here boards with a pixel distance from 12 mm to 25 mm. Each pixel consists of 2 red, 1 green and 1 blue oval single LED with viewing angles of horizontal 120 degrees and vertically 80 degrees. With a brightness from 5.000 to 7.000 cd/m² one has also during direct sun exposure a outstanding readability.



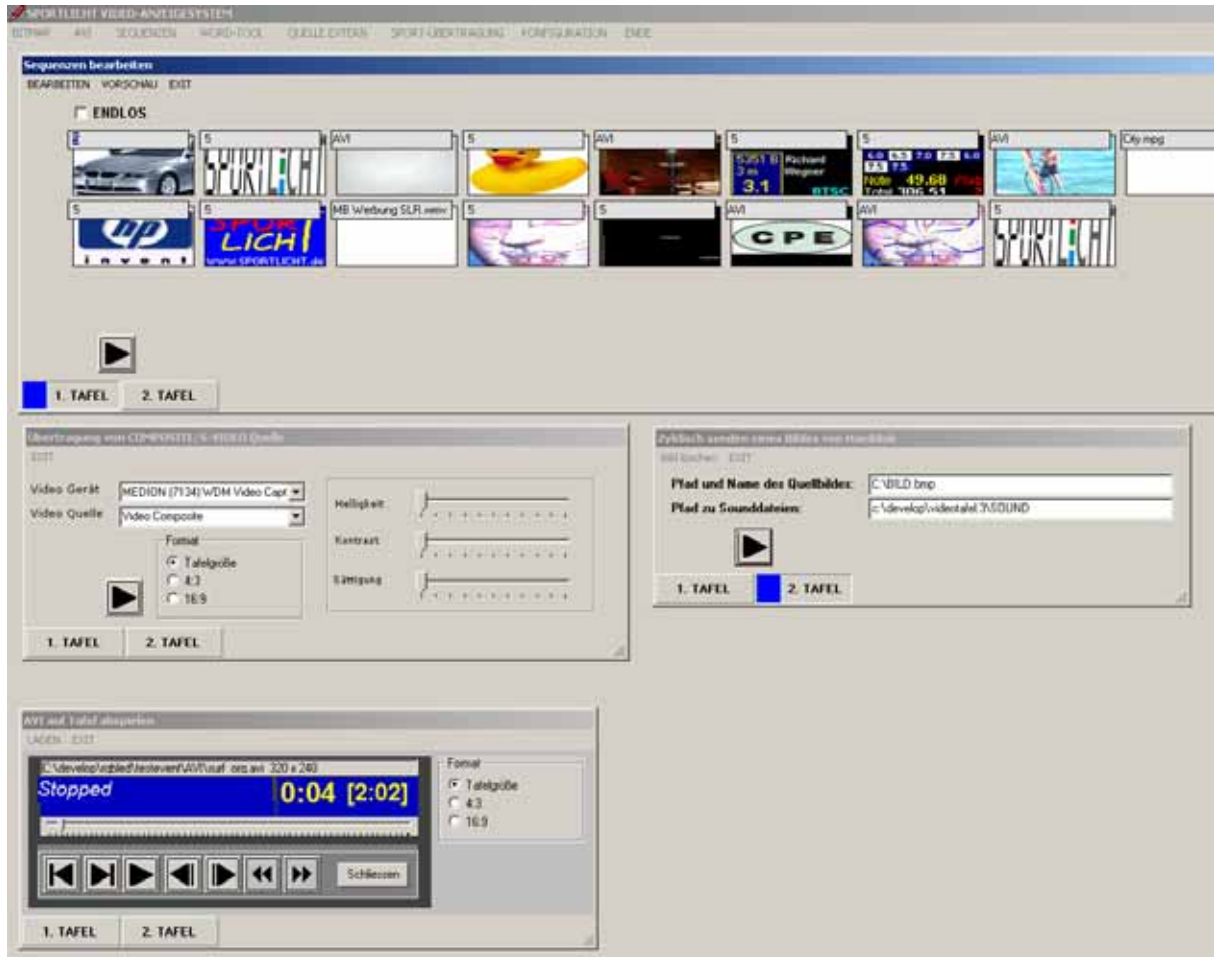
SPORTLICHT
LED Anzeigesysteme / Elektronik Entwicklung / Sport DV-Service

SPORTLICHT GmbH
Summter Str. 81
D – 12623 Berlin
Germany
Tel.: +49 30 567 022 37
Fax: +49 30 567 022 38

Control of video display

Naturally the control of a video board is completely problem-free. Simply to the video display give a video signal via Scaler (scales on the pixel format of the video display) and completely. But many possible applications, like texts, pictures, AVI's or live video, how brought together to a single video signal. Surely, a semi-professional or professional video studio is able to be mixed and synchronized these signals. If then still goes, timeouts or times from sport-specific applications are added, which not available as a video signal, then the price for this equipment can easily exceed that of the video board.

Our Software-scaler, a computer with the software video control, is sufficient, in order to control one or more video displays without large expenditure and very inexpensive.



Whether a logo as Windows bitmap, a AVI, a sequence of pictures and AVI's, a video source with live picture or DVD or also the transfer of alphanumeric sport information – these all simply controlled from a software and from the PC via DVI send to the video board.

Furthermore we can offer software for the sport-specific control of board for the following kinds of sport:

- Match-Control for all kinds of ball haven in a multi sport arena
- SWIMMING, controlled by ARES21 or Colorado Timer
- Waterpolo, Diving and Synchronized Swimming

